



PHILLIP  
FX365

MOBILE APPLICATION GUIDE

## Table of Contents

### Getting Started

<i>Logging onto FX365 Mobile Application</i> .....	<b>1</b>
<i>Understanding the FX365 Mobile Interface</i> .....	<b>2</b>
<i>Accessing the Charting Panel</i> .....	<b>2</b>
<i>Accessing the News Panel</i> .....	<b>3</b>
<i>Accessing Your Account Information</i> .....	<b>3</b>
<i>Placing Orders on Market Tiles</i> .....	<b>4</b>
<i>Placing Orders on Grid Tiles</i> .....	<b>5</b>
<i>Viewing Placed Orders</i> .....	<b>5</b>
<i>Modifying &amp; Cancelling Orders</i> .....	<b>6</b>
<i>Closing &amp; Protecting Orders</i> .....	<b>8</b>
<i>Configuring a Chart</i> .....	<b>9</b>
<i>Working with Chart Studies</i> .....	<b>10</b>

# Getting Started

---

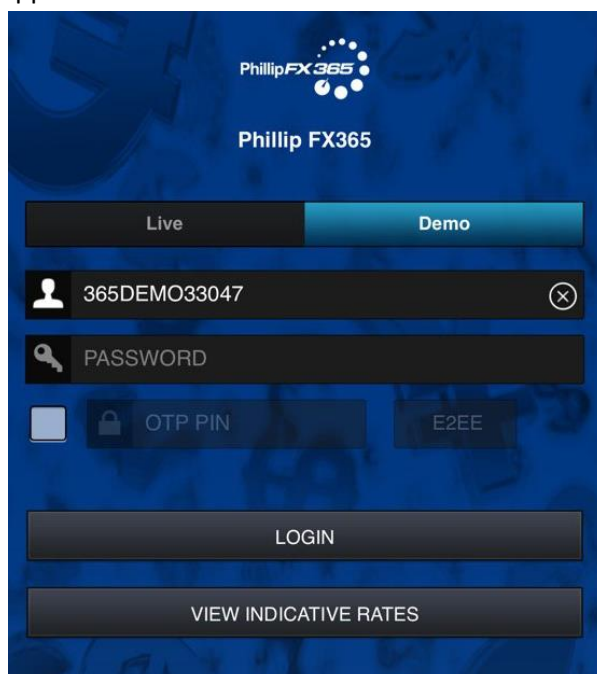
## Logging onto FX365 Mobile Application

Upon enrolling onto the trading platform, your account manager will provide you with your account userid and password. Use these credentials to log into the application. Note that the userid and password are case-sensitive.

When you log in to your FX365 account for the first time, you must change your password. Passwords must be a mix of letters and numbers of at least eight characters. Passwords must include one number and one capital letter.

To log in:

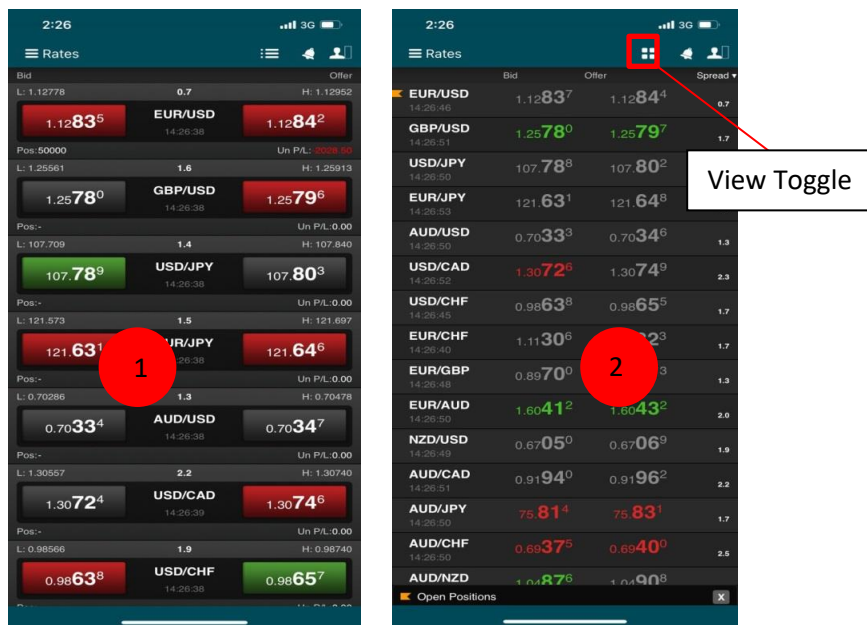
1. Launch the FX365 mobile application.
2. The FX365 Login page appears



3. Tap in the Username text field and enter your username.
4. Tap in the Password text field and enter your password
5. Click Login. The FX365 interface appears.

## Understanding the FX365 Mobile Interface

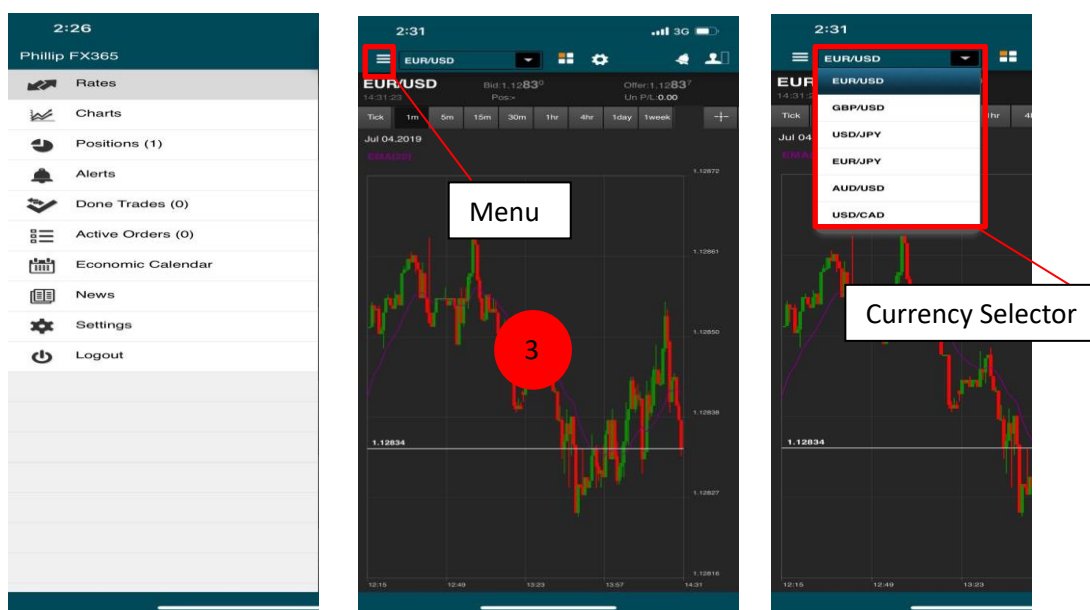
Upon successfully logging into the platform, the first view populating the window is the trading grid tiles. To switch between the list and grid view, simply tap the view toggle icon located at the top right hand corner.



1. **Grid Tile:** Monitor the detailed view of currency pairs at a glance.
2. **List View:** Easily monitor a large set of currency pairs and execute trade in a range of sizes.

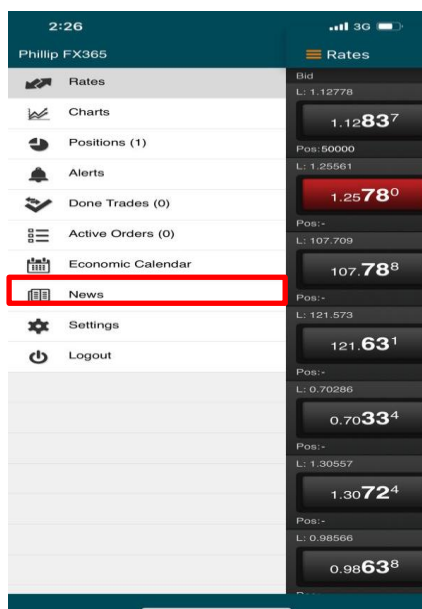
## Accessing the Charting Panel

Upon selecting the menu icon on the panel, a flyout sidebar menu will appear on the left of the interface. Click on “Charts” to view the charting panel. Click on the currency selector to change between currencies.



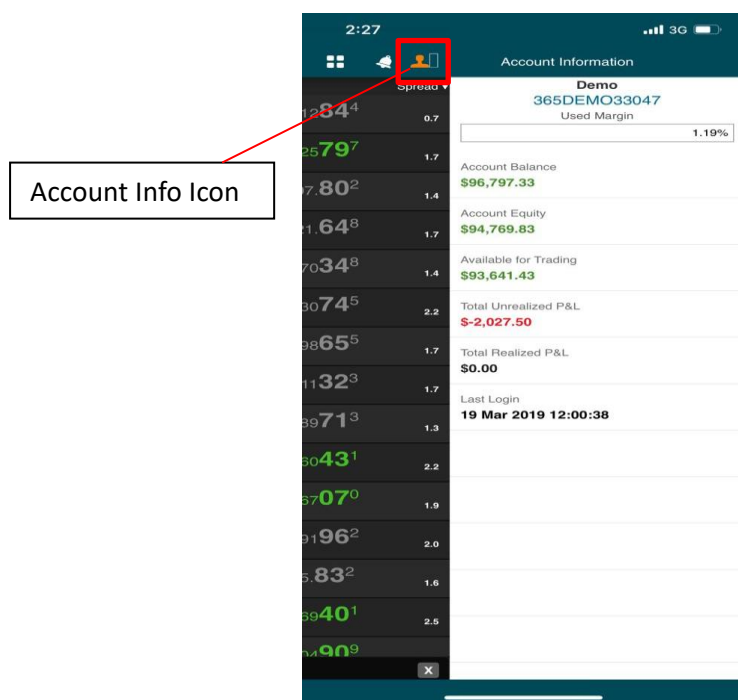
## Accessing the News Panel

Gain access to the latest market news at the tip of your fingers. Upon selecting a bullet news on the panel, the full article expands within the same window. To return to the original page, click on the menu icon and select your preferred option.



## Accessing Your Account Information

View all your account related information such as account balance, account equity, available margin, realised & unrealised P/L at a glance by selecting the account information icon located at the top right hand corner of the application.



# Orders Placement & Management

Orders are your instructions to buy or sell currency pairs. FX365 flexible features enable you to work with a wide array of order types, ranging from simple to complex orders:

### Simple Orders

- Market Order
- Limit Orders
- Stop Orders
- Trailing Stop Orders

### Complex Orders

- Once Cancel Other (OCO) Orders

## Placing Orders on Market Tiles

The top screenshot shows a market tile for EUR/USD. It displays the bid price as 1.12835 and the offer price as 1.12842. The tile also shows the current price as 1.1284, the time as 14:26:38, and the position as 50000. Two red circles with arrows point to the bid and offer prices, labeled '1' and '2' respectively.

The bottom screenshot shows the 'Create Order' screen for EUR/USD. The screen is annotated with several red boxes and labels:

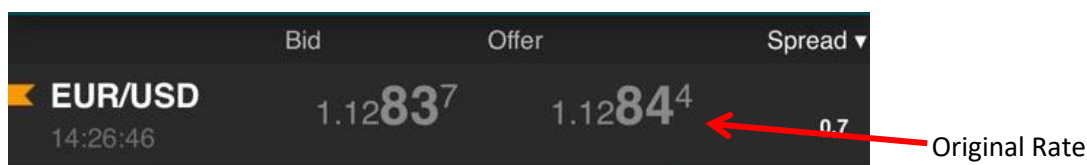
- Order Type:** A red box highlights the 'LIMIT' button among other options (MARKET, STOP, OCO).
- Order Direction:** A red box highlights the 'BUY' button among other options (SELL).
- Trade Quantity:** A red box highlights the '1,000' input field.
- Rate:** A red box highlights the '1.12844' input field for the Limit Rate.
- Expiry Type:** A red box highlights the 'GTC' button among other options (GTD, DAY).
- Enabling partial fill:** A red box highlights the 'YES' button in the 'Partial Fills' section.

At the bottom of the screen, there is a 'PLACE ORDER' button and a note: 'Note: Fill All or None if partial Fill is 'No''. There is also a 'Create Price Alert' checkbox.

- Click the original rate button to access the create order ticket, and define the various fields explained below before submitting the order.
  - **Order Direction** – Specify order to be “Buy” or “Sell”
  - **Trade Quantity** – Specify the desired quantity you wish to trade
  - **Order Type** – Limit, Stop, Market, and OCO (One-cancel-other) orders
  - **Rate** – Specify the rate for orders where applicable (Limit; Stop; OCO)
  - **Expiry Type**
    - GTC (Good Till Cancelled): Order remains in market until executed with pre-determined properties or cancelled.
    - IOC (Immediate or Cancelled): Order is cancelled if not executed immediately.
    - Timed: Order is timed to a defined period. If it remained unfilled after the defined period passes, the order will be removed from the market.
    - Date: Order will be removed if it is not filled after set date.
    - Market: Customise your own expiry time based on end of market closing
  - **Enabling partial fill** – Select to enable or disable partial fill and specifying the minimum expected amount for a partial fill operation.

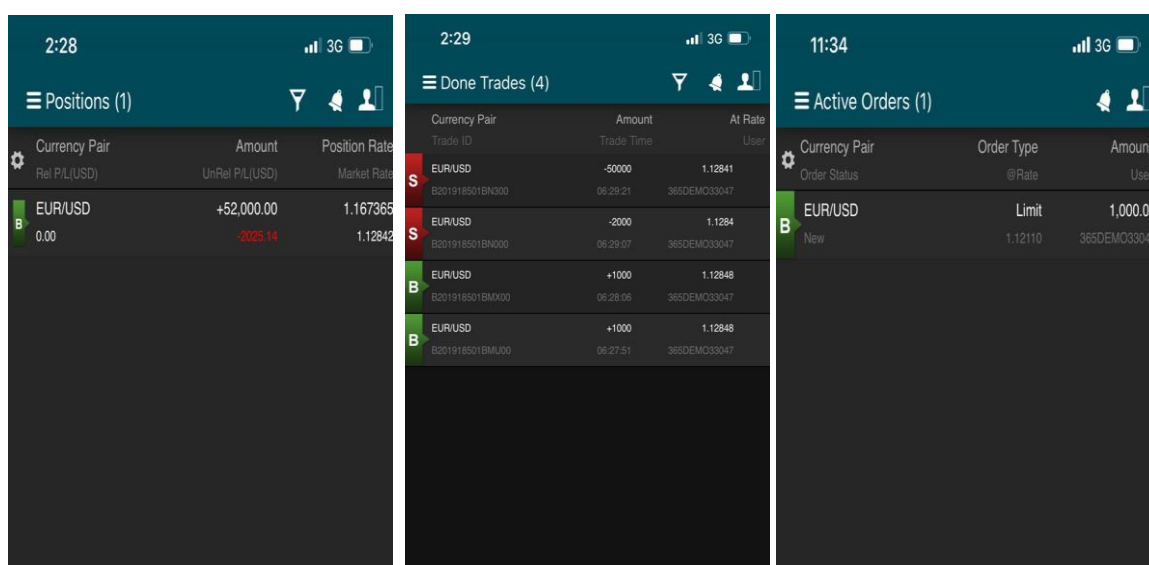
## Placing Orders on Grid Tiles

- Click the original rate to access the create order ticket
- Define the various fields explained above before submitting the order



## Viewing Placed Orders

There are 3 separate tabs which enable you to easily view the details of your orders, they are namely the positions, done trades, and active orders panel.



1. Positions Panel – Shows all opened positions with the option to view detailed information on the trade, and the ability to close or protect position.
2. Done Trades Panel – Shows all positions that has been filled with the option to view detailed information
3. Active Orders Panel – Shows all pending orders that are currently working in the market.

Order Details - Filled	
<b>EUR/USD</b>	
12:04:23	Bid: 1.1211 <sup>4</sup> Pos: 2000
	Offer: 1.1212 <sup>1</sup> Un P/L: -0.29
Order Type	Market
Order ID	5246025475
Order Status	Filled
Amount	1,000.00
User	365DEMO33047
Filled Amount	1,000.00
Balance	0.00
VWAP	1.12122
Expiry Type	Good Till Cancel
Time Submitted	09-07-2019 12:03:50
Side	B

**Order Summary Ticket**

### Modifying & Cancelling Orders

FX365 enables you to modify the rate of Limit orders under the “Active Orders” panel in the expanded view of the order details

Order Details	
<b>EUR/USD</b>	
12:11:32	Bid: 1.1211 <sup>2</sup> Pos: 3000
	Offer: 1.1211 <sup>9</sup> Un P/L: -0.31
Order Type	Limit
Order ID	5246025477
Order Status	New
Amount	1,000.00
User	365DEMO33047
Filled Amount	0.00
Balance	1,000.00
VWAP	0.00000
Expiry Type	Good Till Cancel
Time Submitted	09-07-2019 12:09:48
Show Type	All
Side	B
Limit Rate	1.12044

Cancel Order Button

Modify Order Button

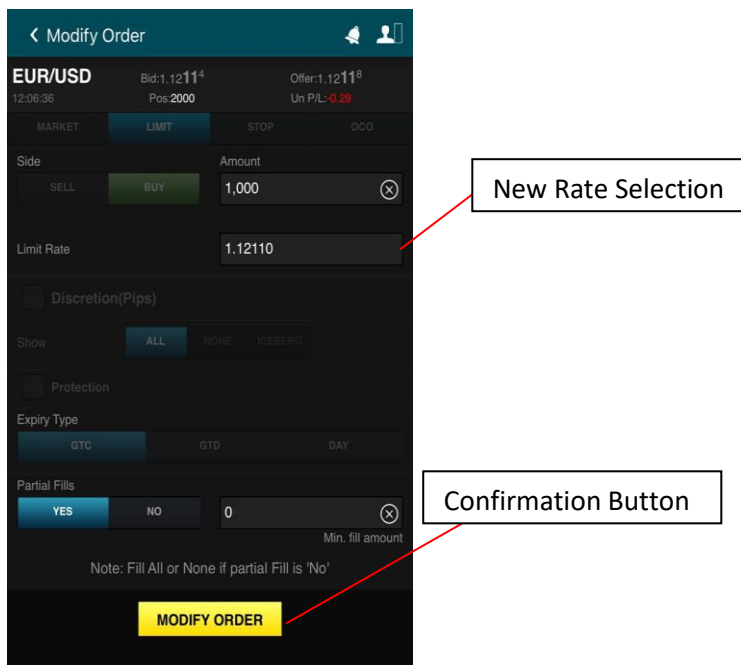
CANCEL ORDER
MODIFY ORDER



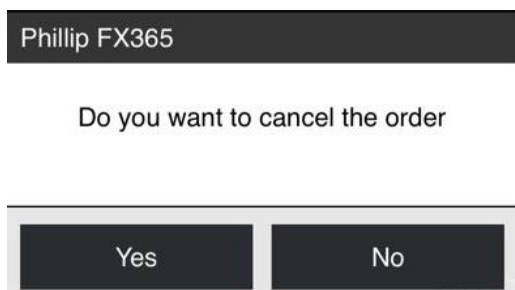
Modifying stop orders will trigger a Modify Order Dialog Popup, which will enable you to easily change available order information such as rate, amount, slippage and trail by pips, and the trigger side of Stop and Trailing Stop Orders.

Upon the selection of “Cancel Order”, an acknowledgment popup appears requesting confirmation. Select “Yes” to complete the process.

**Modify Trade Dialog Popup**

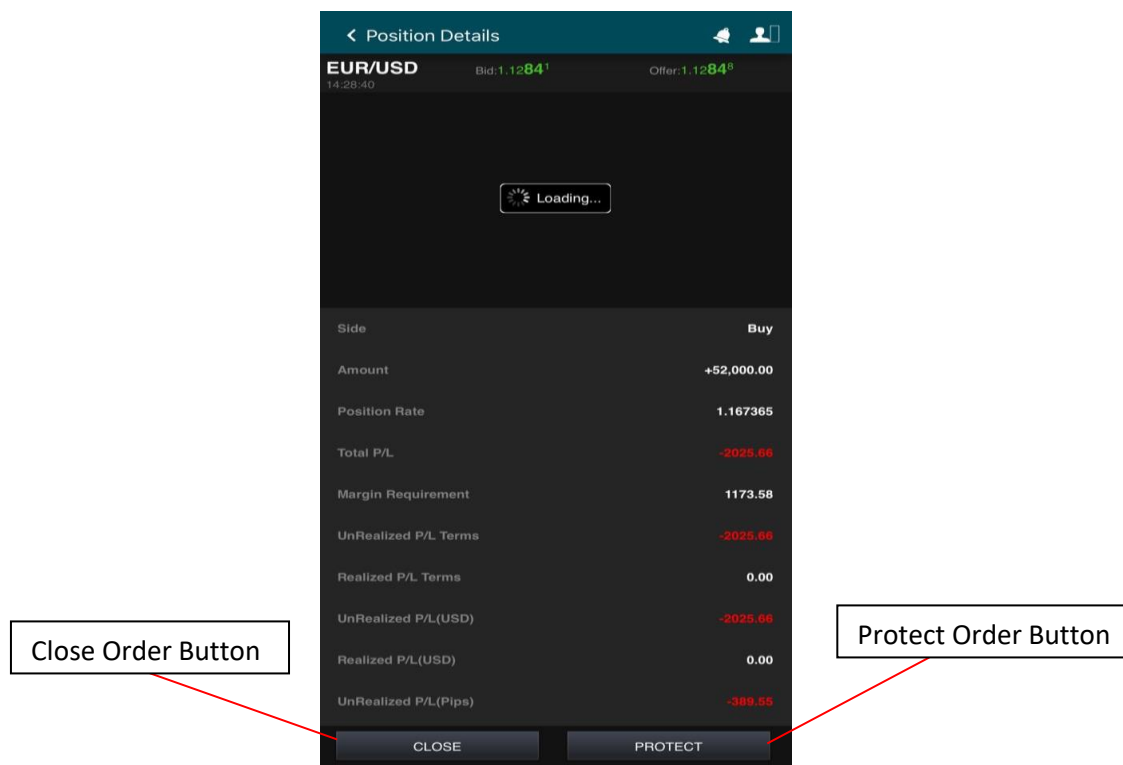


**Acknowledgment Popup**



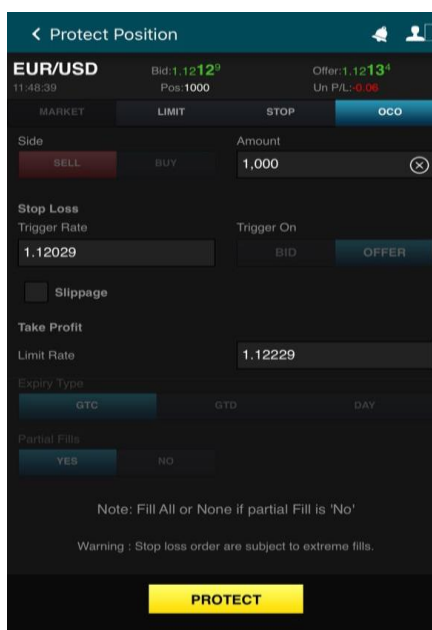
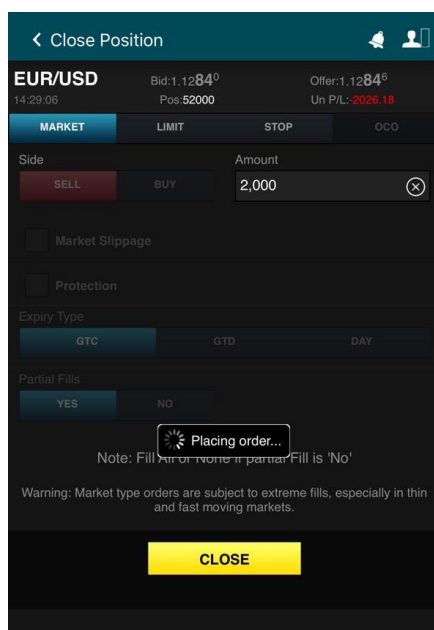
## Closing & Protecting Orders

The functions of closing and protecting an opened position lie within the “Positions” panel.



Closing a position will result in a confirmation prompt. Select the close button in yellow to confirm the closing of position

The selection of protect will trigger a OCO order ticket. Input the desired values within the “Amount” as well as the “Trigger Rate” field to set the relevant parameters. Thereafter, to confirm the operation, select the yellow protect button.



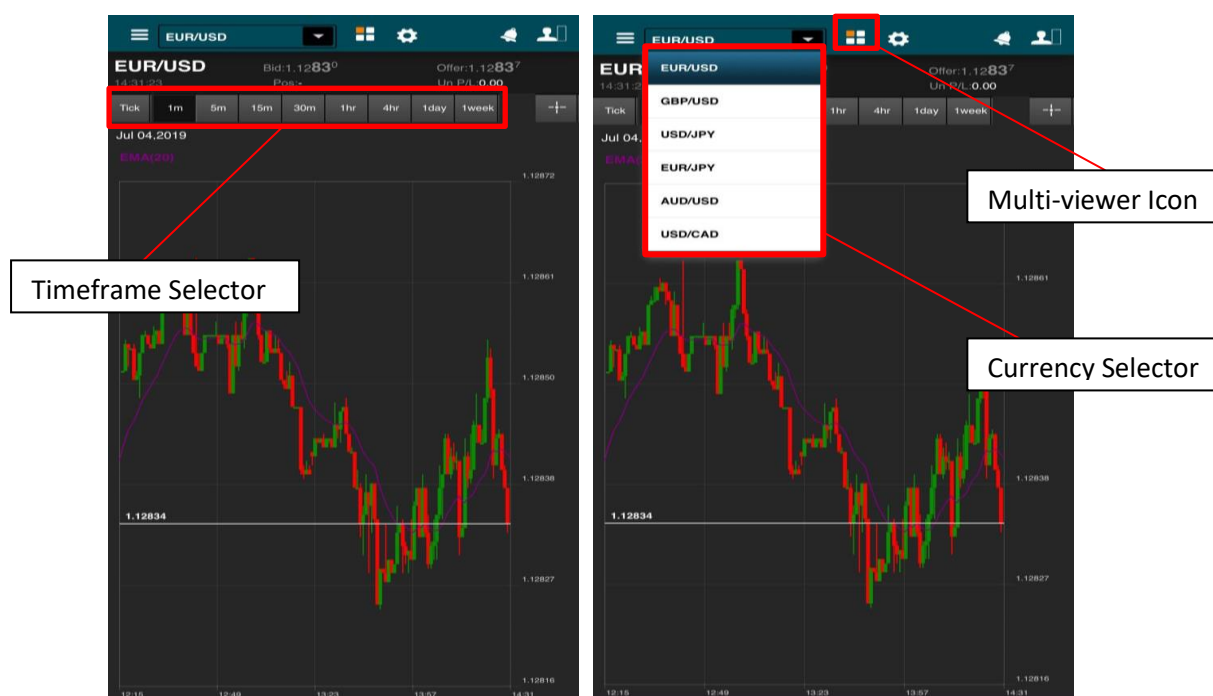
# Working with FX365 Charts

FX365 Charts display a continuous graphical record of the rate history of a selected currency pair. The chart's X-axis delineates time and its Y-axis delineates rate.

FX365 Charts may be configured to suit any long or short-term trading requirements and strategies. You can select multiple Chart types, cursor types, layouts, and etc. The chart also provides studies and drawings that can help you interpret information and postulate changes in rate direction.

## Configuring a Chart

FX365 enables you to easily add a new chart to your interface. You can have one chart per currency pair and as many currency pairs as you need.



**To change the currency pair** – Tap on the drop down bar of the currency selector and select the currency pair of your choice

**To resize a chart** – Use your to pinch inwards or outwards to minimise or maximise your charting size accordingly.

**To change timeframe** – Select your desired timeframe in the selector bar located directly above the charting window

**To view multiple charts** – Click on the multi-viewer icon to view up to 4 different charts.

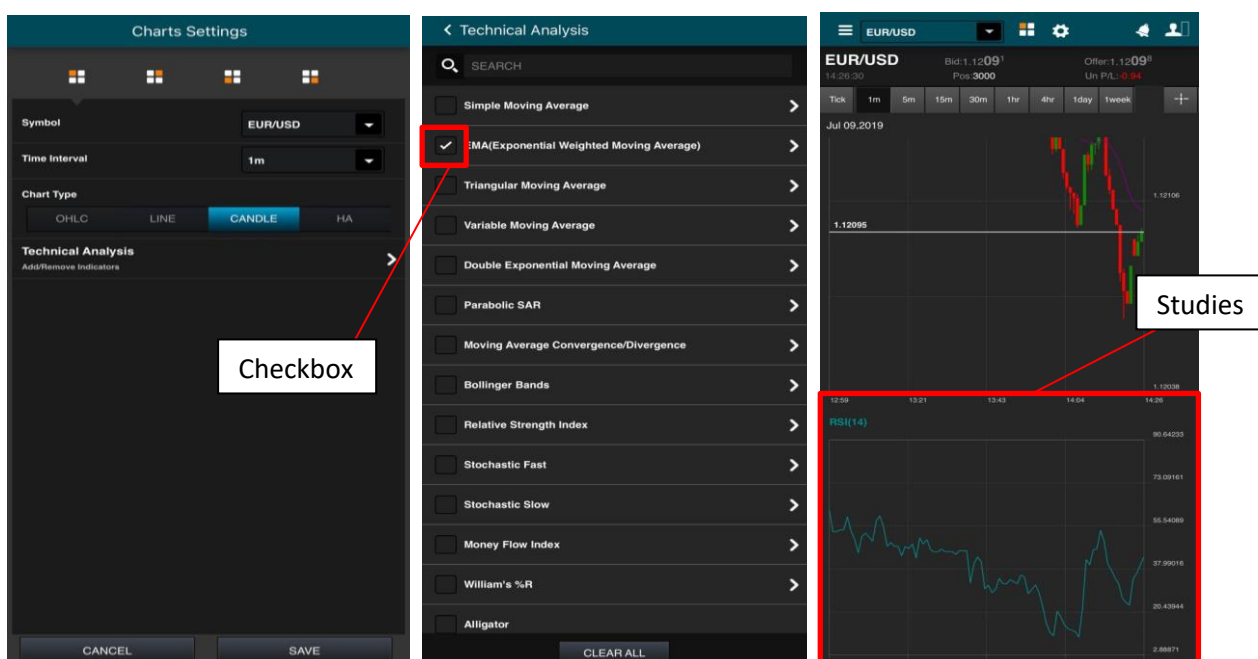
## Working with Chart Studies

FX365 has 60 studies, accessible from the studies dropdown menu.

### Displaying/Removing a Chart Study

To display a chart study:

1. Click on the gear icon (Settings) on the top bar of the application window
2. Select the type of Technical Analysis you want from the studies menu by checking the box beside it.
3. Click the “<” icon located at the top left bar of the window to go back and click “Save”



4. To remove studies, simply uncheck the box on the menu and save.