



Phillip
MetaTrader5

PHILLIP
MT5

MOBILE APPLICATION GUIDE

Table of Contents

Getting Started

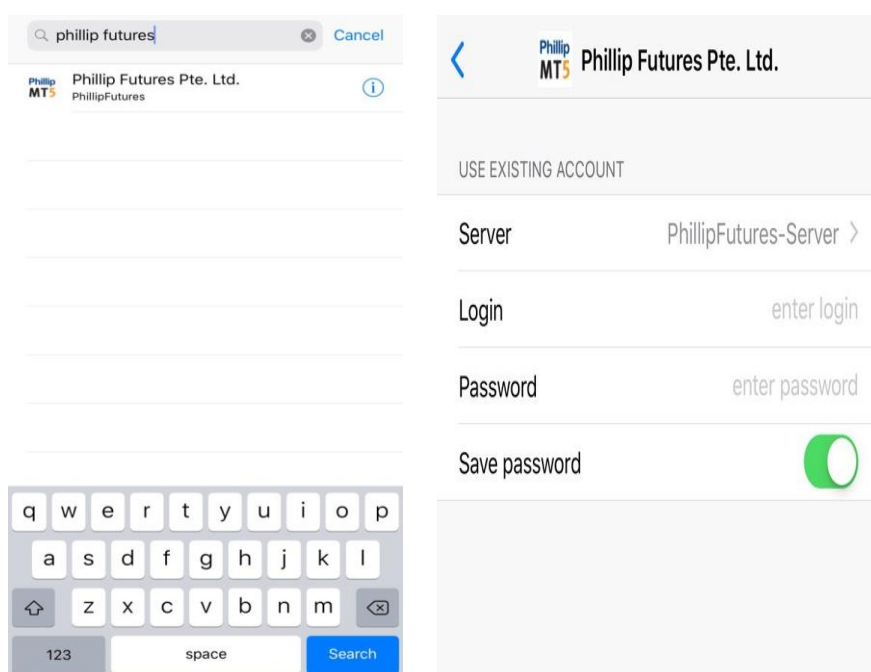
<i>Logging onto Phillip MT5 Mobile Application</i>	<i>1</i>
<i>Understanding the Phillip MT5 Mobile Interface</i>	<i>2</i>
<i>Accessing the Charting Panel</i>	<i>2</i>
<i>Accessing the News Panel.....</i>	<i>3</i>
<i>Accessing Your Account Information</i>	<i>3</i>
<i>Placing Orders on Market Tiles</i>	<i>4</i>
<i>Placing Orders on Grid Tiles</i>	<i>5</i>
<i>Viewing Placed Orders.....</i>	<i>5</i>
<i>Modifying & Cancelling Orders</i>	<i>6</i>
<i>Closing & Protecting Orders.....</i>	<i>7</i>
<i>Configuring a Chart</i>	<i>8</i>
<i>Apply/Edit/Move Delete Drawings</i>	<i>9</i>
<i>Working with Chart Studies</i>	<i>10</i>

Getting Started

Logging onto Phillip MT5 Mobile Application

Upon activating your live account on Phillip MetaTrader 5 (MT5), your account manager will provide you with your account userid and password. Use these credentials to log into the application. Note that the userid and password are case-sensitive.

When you log in to your MT5 account for the first time, you must search for Phillip Futures as the broker and configure the server settings to “PhillipFutures – Server”.

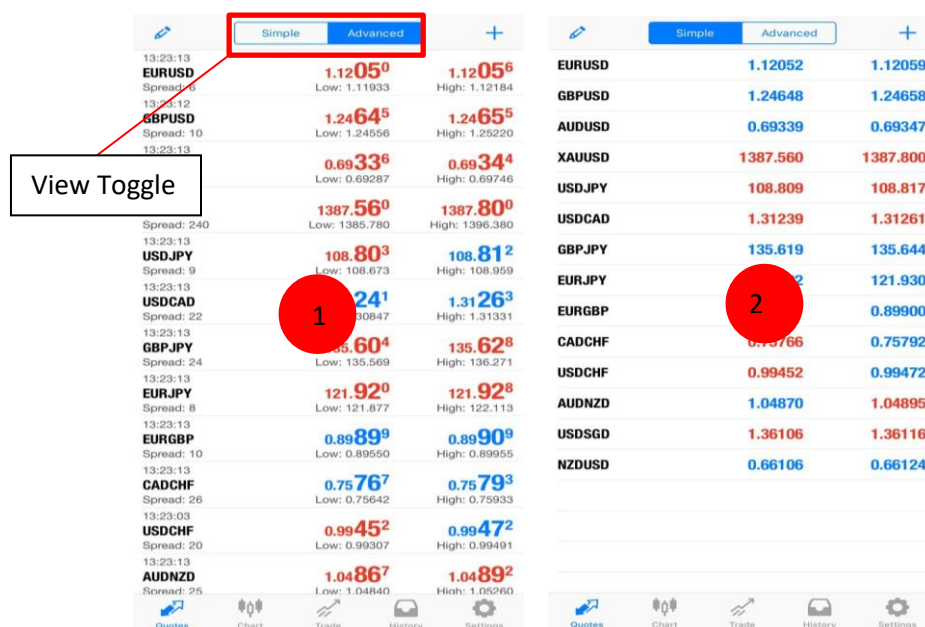


To log in:

1. Launch Phillip MT5 application
2. Configure Server to “PhillipFutures – Server”
3. Enter Username in the relevant text field.
4. Enter Password in relevant text field.
5. Click Login.

Understanding the Phillip MT5 Mobile Interface

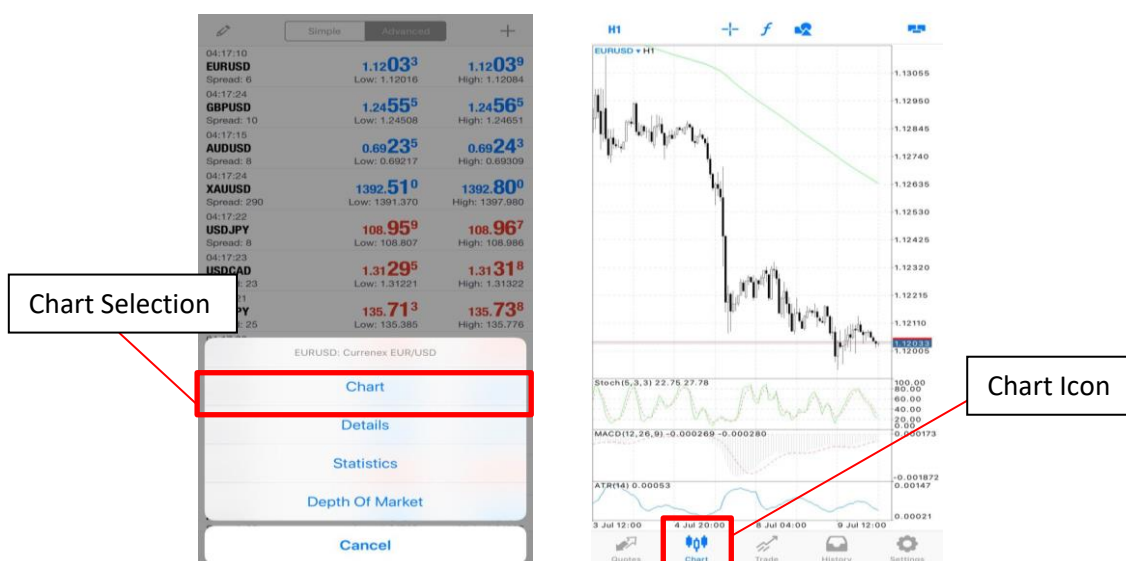
Upon successfully logging into the platform, the first view populating the window is the trading grid tiles. To switch between the list and grid view, simply tap the view toggle icon located at the top right hand corner.



1. **Grid Tile:** Monitor the detailed view of currency pairs at a glance.
2. **List View:** Easily monitor a large set of currency pairs and execute trade in a range of sizes.

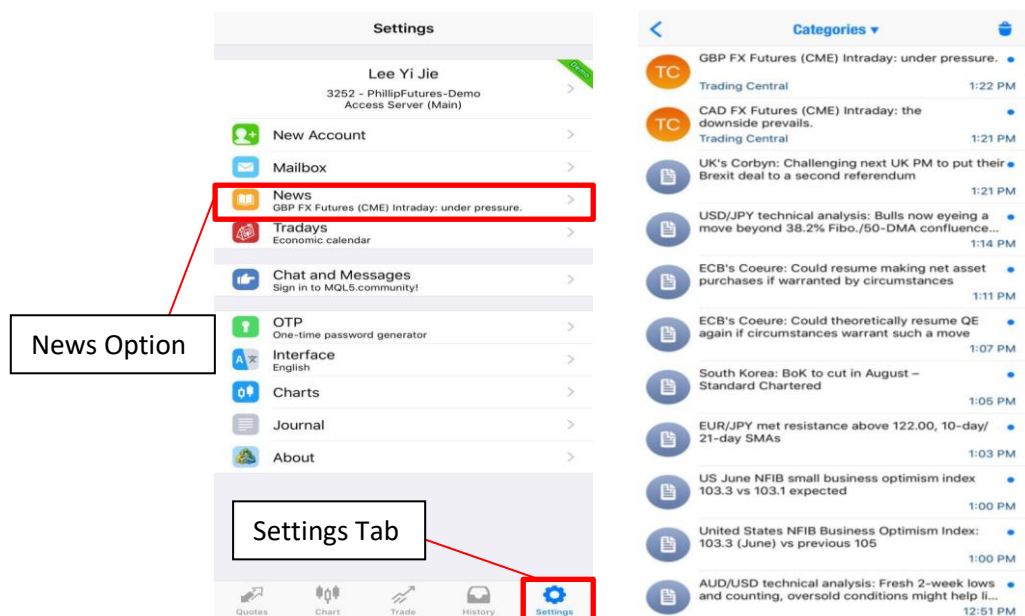
Accessing the Charting Panel

There are two ways to access the charting panel. From the grid tile or list view, simply tap on the desired currency and a pop-up prompt will appear, select “Chart” and the window will automatically be redirected to the charting panel. Another method would be via the chart icon located at the bottom selection bar of the window.



Accessing the News Panel

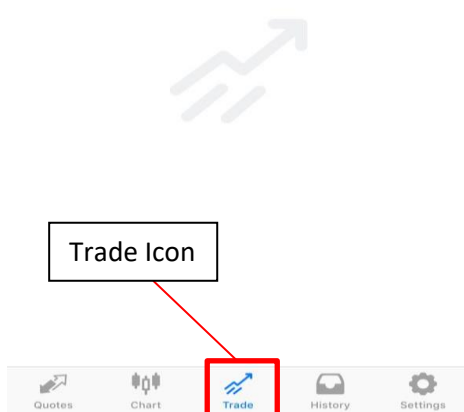
Gain access to the latest market news at the tip of your fingers. Upon selecting the settings tab on the menu bar, the window will be redirected to the setting configuration page. To access the news panel, select the “News” option and up-to-date list of bullet news will populate the window.



Accessing Your Account Information

View all your account related information such as account balance, account equity, available margin, realised & unrealised P/L at a glance by selecting the Trade icon located at the bottom selection bar of the application.

USD		+
Balance:	48 878.51	
Equity:	48 878.51	
Free Margin:	48 878.51	



Orders Placement & Management

Orders are your instructions to buy or sell currency pairs. FX365 flexible features enable you to work with a wide array of order types, ranging from simple to complex orders:

Simple Orders

- Market Order
- Limit Orders
- Stop Orders
- Trailing Stop Orders

Complex Orders

- Once Cancel Other (OCO) Orders

Placing Orders on Market Tiles

The screenshot displays the order placement interface for EURUSD. At the top, the market tile shows the time 13:23:13, the currency pair EURUSD, a spread of 6, and bid/ask rates of 1.12050 and 1.12056. Below this, the order types menu is open, listing: Exchange Execution, Buy Limit, Sell Limit, Buy Stop, Sell Stop, Buy Stop Limit, and Sell Stop Limit. The trade quantity is set to 1.00. The order direction is set to Sell, and the rate is 1.12071. The price chart at the bottom shows the current price at 1.12071.

1. Click the Bid/Ask rate button to access the create order ticket, and define the various fields explained below before submitting the order.
 - **Order Type** – Market, Limits, Stops and Stop Limit (Working) orders
 - **Trade Quantity** – Specify the desired quantity you wish to trade
 - **Rate** – Specify the rate for orders where applicable (Limit; Stop; OCO)
 - **Order Direction** – Specify order to be “Buy” or “Sell”

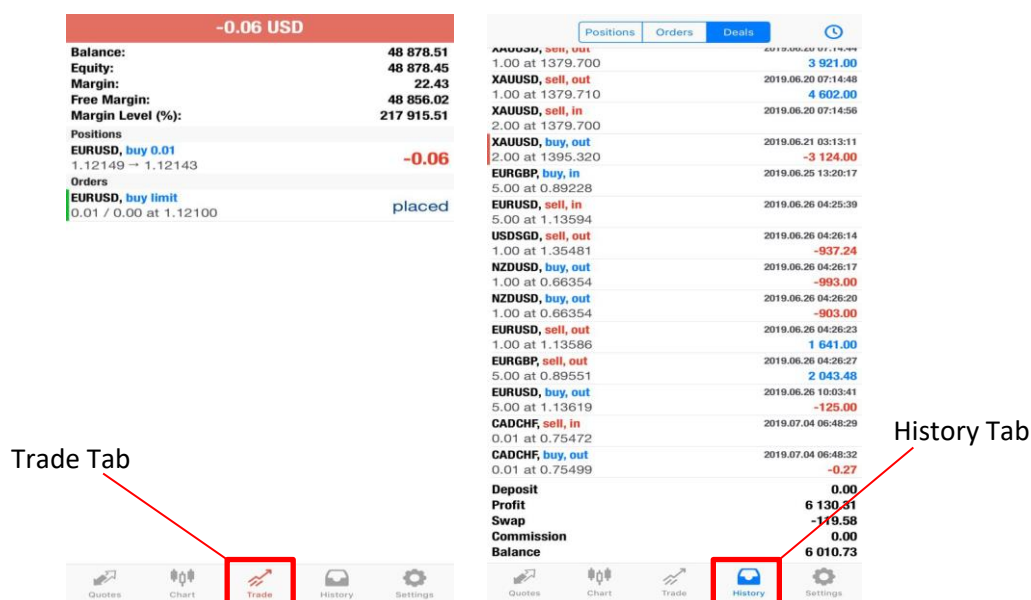
Placing Orders on Grid Tiles

1. Click the original rate to access the create order ticket
2. Define the various fields explained above before submitting the order



Viewing Placed Orders

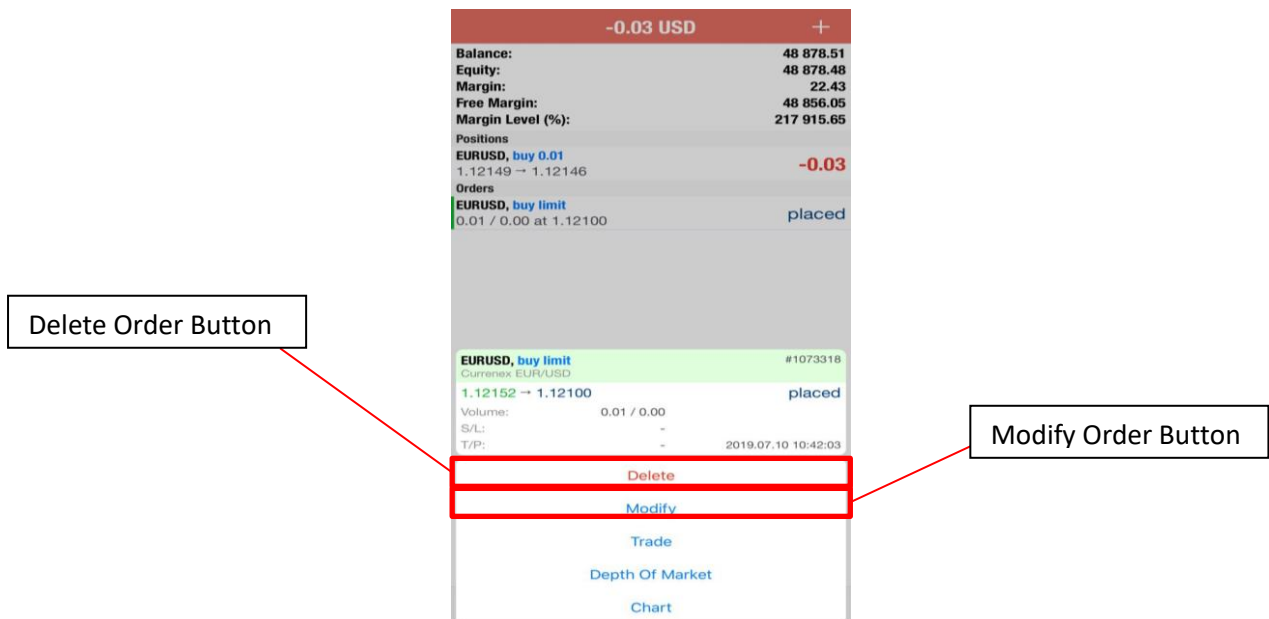
There are 2 separate tabs which enable you to easily view the details of your orders, they are namely the trade and history tab.



1. Trade Tab – Shows all opened and pending positions with the option to view detailed information on the trade, and the ability to close or modify position.
2. History Tab – Shows all positions that has been filled with the option to view detailed information

Modifying & Cancelling Orders

FX365 enables you to modify the rate of Limit orders under the “Active Orders” panel in the expanded view of the order details

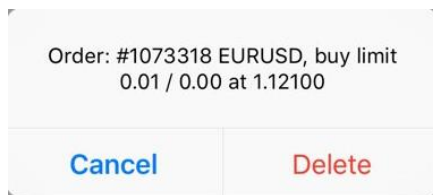


Modifying stop orders will trigger a Modify Order Dialog Popup, which will enable you to easily change available order information such as rate of order and levels of stop loss and take profit.

Upon the selection of “Delete”, an acknowledgment popup appears requesting confirmation. Select “Yes” to complete the process.

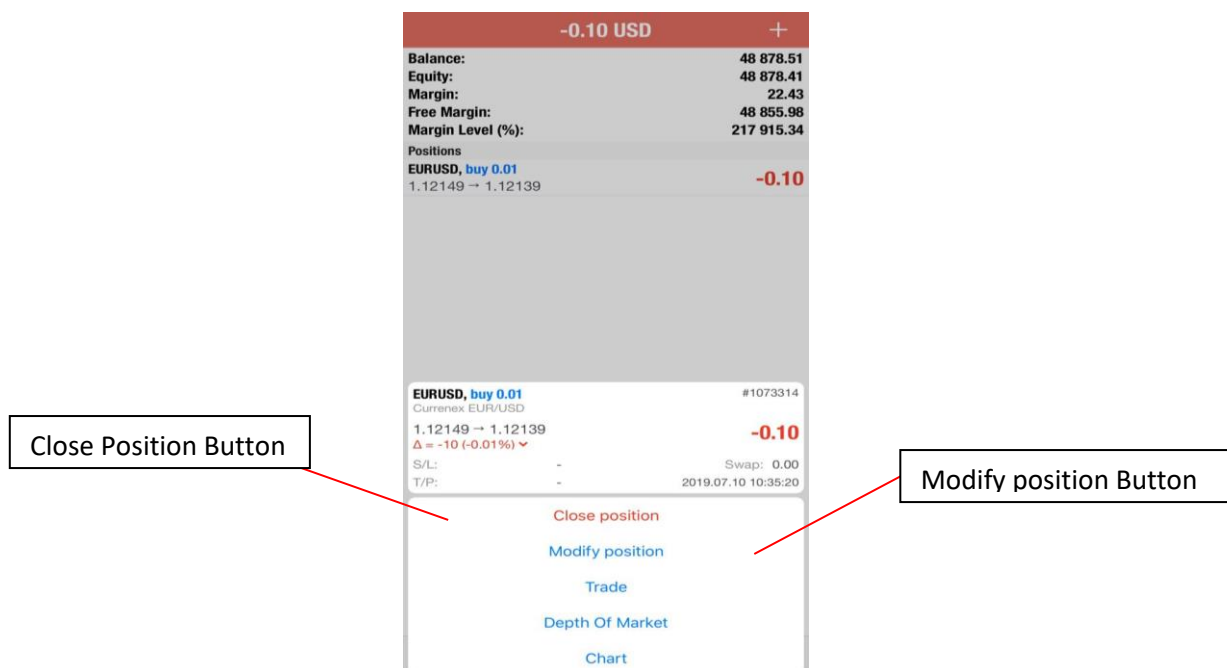


Acknowledgment Popup

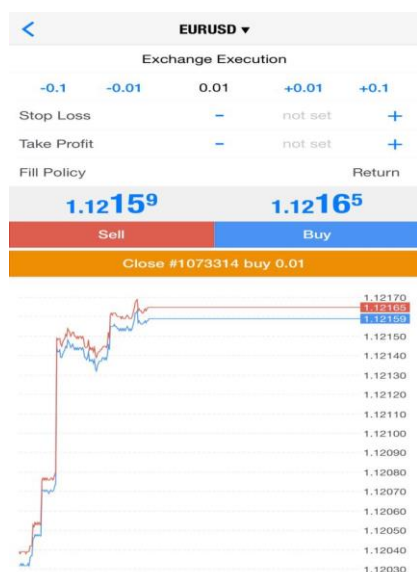


Closing & Protecting Orders

The functions of closing and protecting an opened position lie within the “Trade” tab.



Closing a position will result in a confirmation prompt. Select the close button in orange to confirm the closing of position.



Working with Phillip MT5 Charts

Phillip MT5 Charts display a continuous graphical record of the rate history of a selected currency pair. The chart's X-axis delineates time and its Y-axis delineates rate.

Phillip MT5 Charts may be configured to suit any long or short-term trading requirements and strategies. You can select multiple Chart types, cursor types, layouts, and etc. The chart also provides studies and drawings that can help you interpret information and postulate changes in rate direction.

Configuring a Chart

MT5 enables you to easily add a new chart to your interface. You can have one chart per currency pair and as many currency pairs as you need.

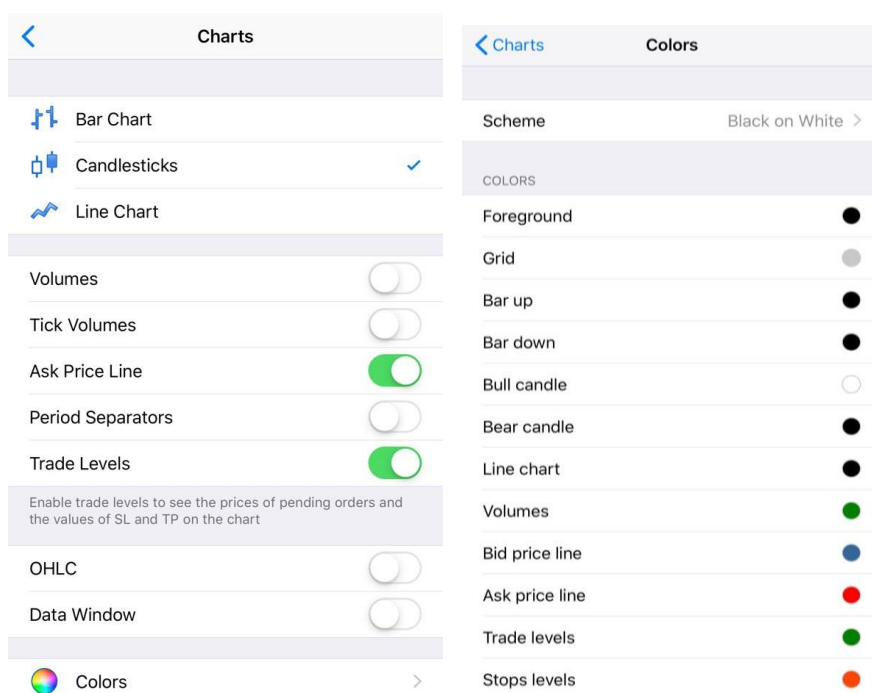


To change the currency pair – Tap on the drop down bar of the currency selector and select the currency pair of your choice

To resize a chart – Use your to pinch inwards or outwards to minimise or maximise your charting size accordingly.

To change timeframe – Select your desired timeframe in the selector bar located on the top left, above the charting window.

Selecting the “Chart” option within the settings tab allows you to configure the look and feel of the charting panel. The colour of every chart component is configurable under the settings.



Apply/Edit/Move Delete Drawings

Phillip MT5 Mobile Application provides up to 24 drawing tools in 6 broad categories which you can use for analysis to facilitate your trading.

- Lines
- Channels
- Gann
- Fibonacci
- Elliot
- Shapes

Adding a Drawing

- Click the drawing icon within the charting panel and select the object of your preference.
- Click and drag the tool to create the desired drawing.

Editing a Drawing

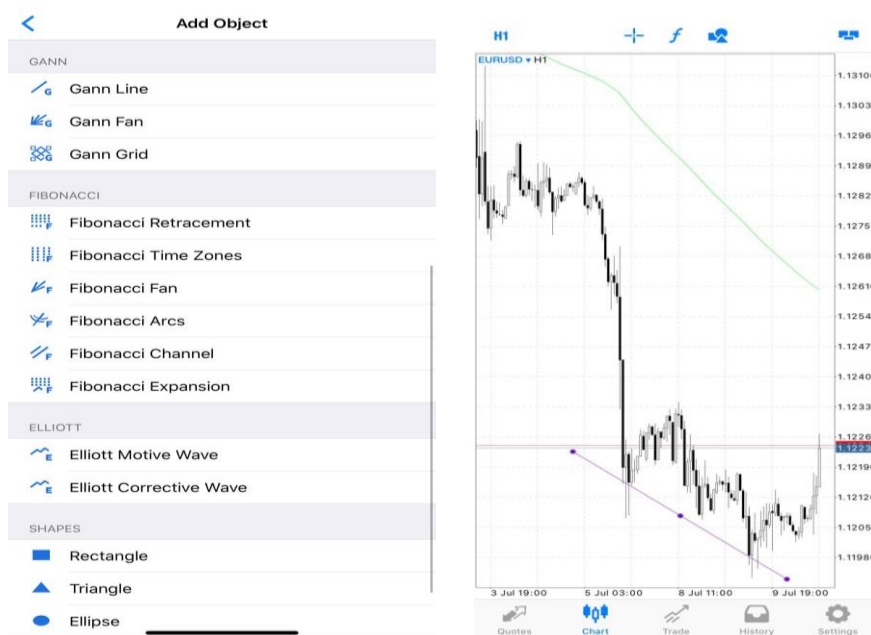
- Tap on the drawing you wish to edit and two circles should appear to indicate that the object is in “edit” mode.

Moving a Drawing

- In the edit mode, drag drawing to desired location and tap once to exit edit mode

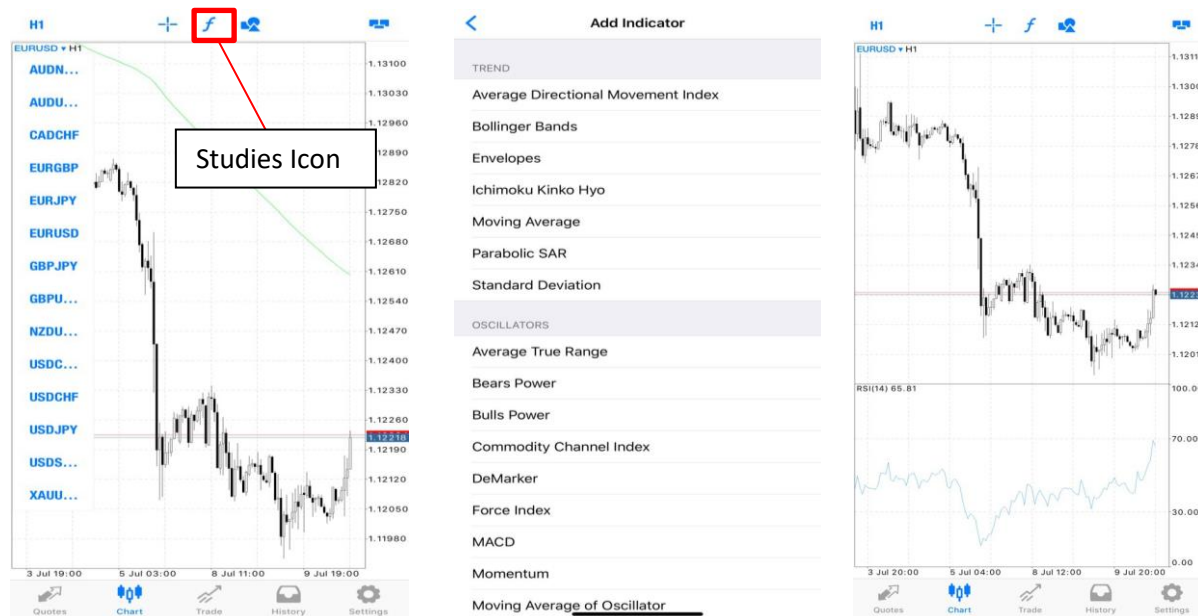
Delete a Drawing

- To delete a drawing, tap to enter edit mode, hold down on the drawing until an option menu appears. Select “delete” to remove it.



Working with Chart Studies

Phillip MT5 has 30 studies, accessible from the studies menu in the charting panel.

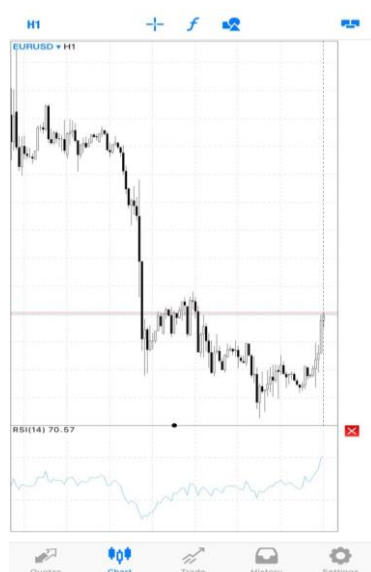


Displaying a Chart Study

1. Click on the indicator icon on the top menu of the application window
2. Select the type of indicator you want from the studies menu
3. The indicator properties menu will appear to allow user setting inputs
4. Select “Done” when input is complete
5. Chart study will automatically appear in the charting panel

Removing a Chart Study (Method 1)

- Tap and hold down on the screen at the charting panel
- An “X” will appear on the right of the indicator column
- Select the “X” to remove the relevant indicator



Remove a Chart Study (Method 2)

- Tap any location within the charting panel and an options pop-up menu will appear
- Select the option “indicator”
- Swipe right on the unwanted indicator
- Tap “delete” and the indicator will be removed

